

BATTERIE

LOCKED OUT OF HEAVEN

BRUNO MARS

C Dm

INTRO

C Bb F Gm C Dm

AH YEAH

C Bb F Gm C Dm

COUplet

NEVER HAD MUCH FAITH

C Bb F Gm C Dm

NEVER WANNA PUT MY HEART

PRE

C Bb F Gm C Dm

CAUSE YO'ER SEX TAKES ME

F A

REFRAIN

Bb Gm

AND IT SHOWS

CAUSE YOU MAKE ME FEEL LIKE

F C

LOCKED OUT OF HEAVEN

B \flat

G M



YEAH YOU MAKE ME FEEL LIKE

F

C

C D M

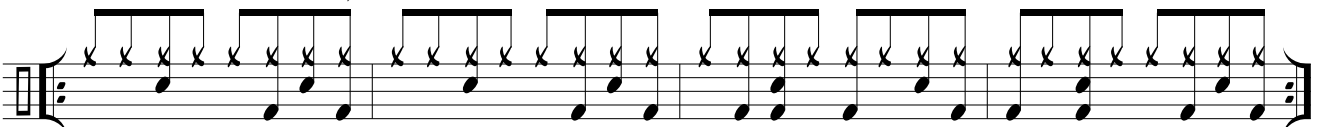


C B \flat

F G M

C D M

INTERLUDE

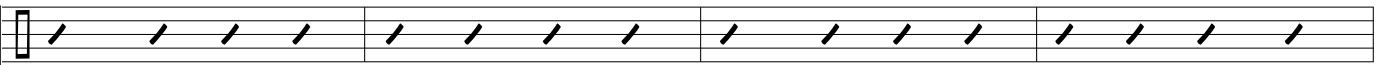


AH YEAH

C D M

BASS ONLY

COUplet

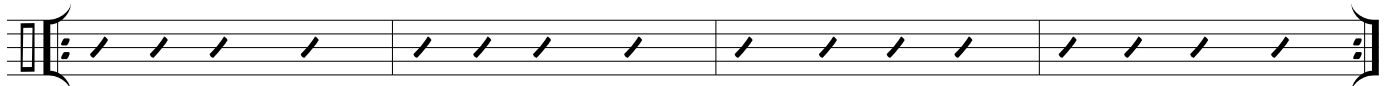


YOU BRING ME TO MY KNEES

C B \flat

F G M

C D M B x

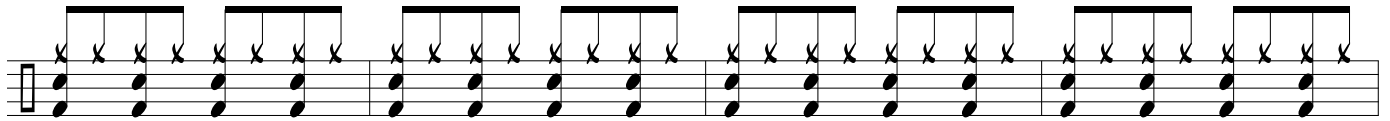


C B \flat

F G M

C D M

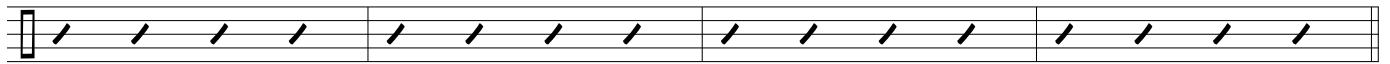
PRE



CAUSE YOYR SEX TAKES ME

F

A

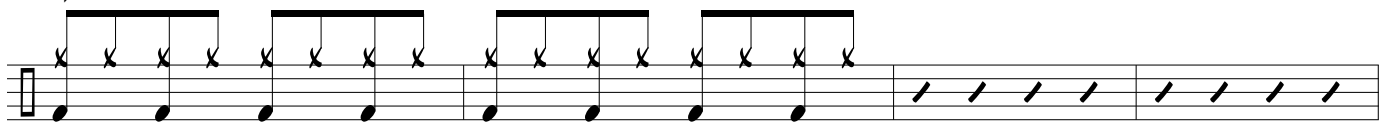


AND IT SHOWS

B \flat

G M

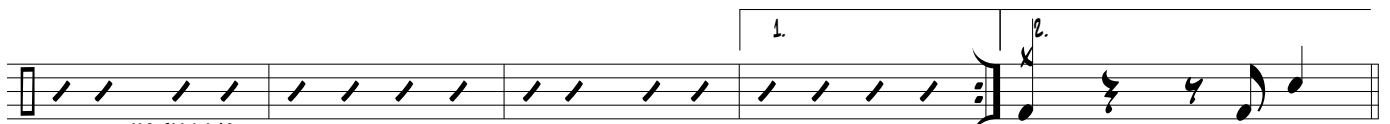
REFRAIN



YOU MAKE ME FEEL LIKE

F

C



FOR TOO LONG

LOCKED OUT OF HEAVEN

PONT

Musical notation for the first staff of the 'PONT' section. It features a treble clef, a key signature of one flat (Bb), and a common time signature (C). The notation includes a series of eighth notes with 'x' marks above them, followed by a series of diagonal slashes. Above the staff, the chords Bb and GM are indicated. Below the staff, the lyrics 'OH WOO OH WOO OH' and 'YEAH' are written.

F OH WOO OH WOO OH C YEAH

Musical notation for the second staff of the 'PONT' section, consisting of a series of diagonal slashes.

Bb CAN I JUST STAY HERE? GM

REFRAIN

Musical notation for the first staff of the 'REFRAIN' section. It features a treble clef and a common time signature (C). The notation consists of a series of eighth notes. Above the staff, the text 'QUIT AND BASS ONLY' is written. Below the staff, the lyrics 'YOU MAKE ME FEEL LIKE' are written.

F YOU MAKE ME FEEL LIKE C

Musical notation for the second staff of the 'REFRAIN' section, consisting of a series of eighth notes.

Bb FOR TOO LONG GM

Musical notation for the third staff of the 'REFRAIN' section, featuring eighth notes with eighth rests.

F YOU MAKE ME FEEL LIKE C DM

Musical notation for the fourth staff of the 'REFRAIN' section, featuring eighth notes with eighth rests and a final triplet of eighth notes with 'x' marks.

FOR TOO LONG C Bb F GM C DM

OUTRO

Musical notation for the first staff of the 'OUTRO' section, featuring eighth notes with 'x' marks above them.

Musical notation for the second staff of the 'OUTRO' section, featuring eighth notes with 'x' marks above them.