

WHAT A WONDERFUL

BATTERIE

WORLD

LOUIS ARMSTRONG

Musical notation for the first staff, showing a 4/4 time signature and a sequence of eighth notes with triplets. Chords F, GM7, and C7 are indicated above the notes.

A

Musical notation for the second staff, starting with a box labeled "A". It shows a sequence of eighth notes with triplets and then rests. Chords F, AM, Bb, AM, GM7, F, A7, and DM are indicated above the notes.

Db GM7/C C7 F FAUG Bb C7
FILL

F AM Bb AM GM7 F A7 DM

Db GM7/C C7 F Bb F
FILL

C7 F C7 F

B

Musical notation for the seventh staff, starting with a box labeled "B". It shows rests. Chords DM, C/E, DM/F, C/G, DM/F, F#dim, GM7, F#dim, and C7 are indicated above the notes. The word "FILL" is written below the final measure.

F AM Bb AM GM7 F A7 DM

C

Musical notation for the ninth staff, starting with a box labeled "C". It shows rests.

WHAT A WONDERFUL

WORLD

D \flat

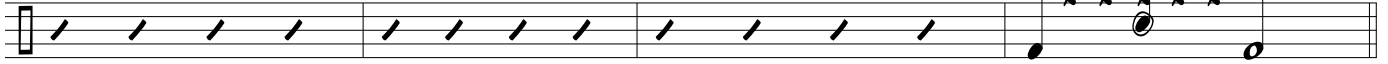
Gm7/C

C7

F

Am7

D7



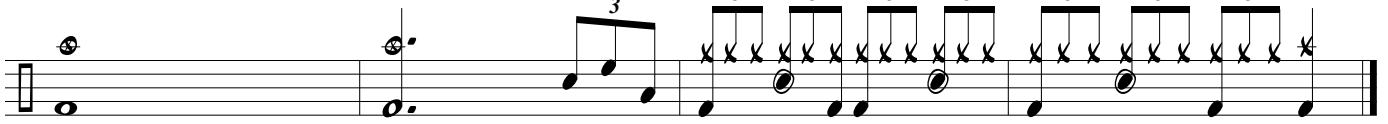
Gm7

C7

F

B \flat

F



YES I THINK TO MYSELF

WHAT A WON-DER-FUL

WORLD