

SOMEWHERE ONLY

F#M **C#M** **WE KNOW** **D** **E**

Bm **FILL**

SO TELL ME WHEN YOU'RE GONNA LET ME IN I'M GETTING TIRED AND I NEED SOMEWHERE TO BEGIN

D **A** **E** **D** **A** **E**

REFRAIN

AND IF YOU HAVE A MINUTE, WHY DON'T WE GO TALK ABOUT IT SOMEWHERE ONLY WE KNOW?

D **A** **E** **Bm** **C#M**

FILL

THIS COULD BE THE END OF EVERYTHING SO WHY DON'T WE GO? SO WHY DON'T WE GO?

Bm **C#M** **Bm** **E**

F#M **C#M** **Bm** **D** **E**

m²

PRE

RIDE

F#M **C#M** **Bm** **D** **E**

F#M **C#M** **Bm** **D** **E**

F#M **C#M** **Bm** **D** **E**

FILL

Bm **A** **E** **Bm** **A** **E**

REFRAIN

Bm **A** **E** **Bm** **C#M**

Bm **A** **E** **Bm** **A** **E**

INTERLUDE

SOMEWHERE ONLY

B_M

A

E

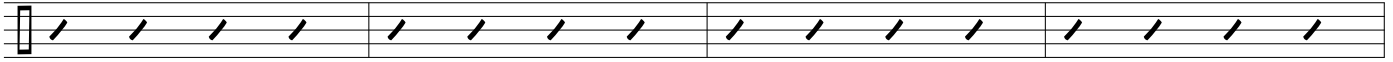
WE KNOW

B_M

C_{#M}

A

REFRAIN



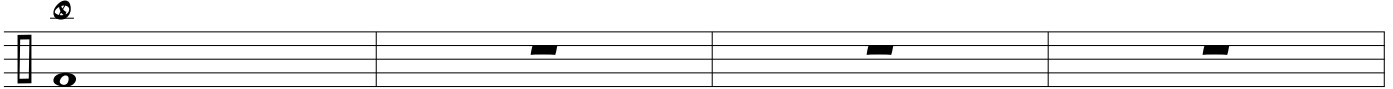
B_M

C_{#M}

B_M

C_{#M}

B_M



f

A

