

BATTERIE

YELLOW

COLOPLAY

INTRO

INTRO

4/4

ff

o

>

>

COUPLÉ

COUPLÉ

+

o

+

o

m^l

REFRAIN

REFRAIN

RISE

m^l

o

YELLOW

A musical staff with a treble clef. It contains a melodic line starting with a quarter note, followed by a half note, and ending with a quarter note under a fermata. There are also some rhythmic markings (slashes) in the first two measures.

INSTRU

A musical staff with a treble clef. It features a rhythmic pattern of eighth notes with 'x' marks above them, indicating articulation. The dynamic marking **ff** is present. There are also some rhythmic markings (slashes) in the later measures.

COUplet

A musical staff with a treble clef. It features a rhythmic pattern of eighth notes with 'x' marks above them, indicating articulation. The dynamic marking **mp** is present. There are also some rhythmic markings (slashes) in the later measures.

REFRAIN

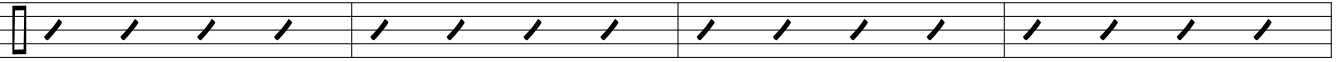
A musical staff with a treble clef. It features a rhythmic pattern of eighth notes with 'x' marks above them, indicating articulation. The dynamic marking **mf** is present. There are also some rhythmic markings (slashes) in the later measures.

INSTRU

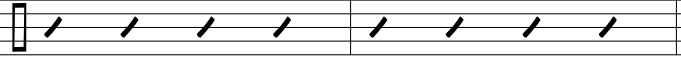
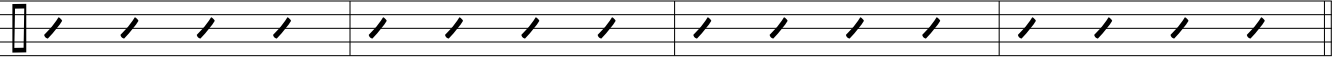
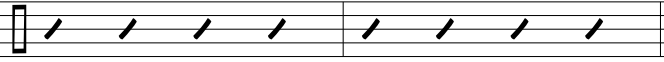
A musical staff with a treble clef. It features a rhythmic pattern of eighth notes with 'x' marks above them, indicating articulation. The dynamic marking **ff** is present. There are also some rhythmic markings (slashes) in the later measures.

YELLOW

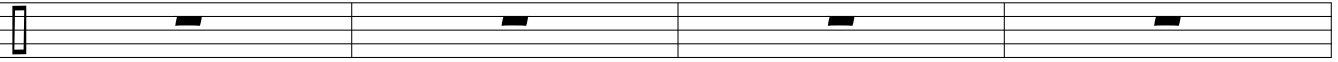
POST



ff



OUTRO



mf

