

THUNDER

BATTERIE

IMAGINE DRAGONS

COUPLET

Musical notation for the first line of the Couplet section, featuring a 4/4 time signature and a common time signature (C). The notation includes eighth notes and rests, with a common time signature (C) above the first measure and an F chord above the third measure.

Musical notation for the second line of the Couplet section, featuring a 4/4 time signature and a common time signature (C). The notation includes eighth notes and rests, with a common time signature (C) above the first measure and an F chord above the third measure.

REFRAIN

Musical notation for the first line of the Refrain section, featuring a 4/4 time signature and a common time signature (C). The notation consists of diagonal slashes representing a drum pattern, with a common time signature (C) above the first measure, an Am chord above the third measure, and an F chord above the fourth measure.

Musical notation for the second line of the Refrain section, featuring a 4/4 time signature and a common time signature (C). The notation consists of diagonal slashes representing a drum pattern, with a common time signature (C) above the first measure, an Am chord above the third measure, and an F chord above the fourth measure.

Musical notation for the third line of the Refrain section, featuring a 4/4 time signature and a common time signature (C). The notation consists of diagonal slashes representing a drum pattern, with a common time signature (C) above the first measure.

COUPLET

Musical notation for the first line of the second Couplet section, featuring a 4/4 time signature and a common time signature (C). The notation includes eighth notes and rests, with a common time signature (C) above the first measure and an F chord above the third measure.

Musical notation for the second line of the second Couplet section, featuring a 4/4 time signature and a common time signature (C). The notation consists of diagonal slashes representing a drum pattern, with a common time signature (C) above the first measure and an F chord above the third measure.

Musical notation for the third line of the second Couplet section, featuring a 4/4 time signature and a common time signature (C). The notation consists of diagonal slashes representing a drum pattern, with a common time signature (C) above the first measure, an Am chord above the third measure, and an F chord above the fourth measure.

REFRAIN

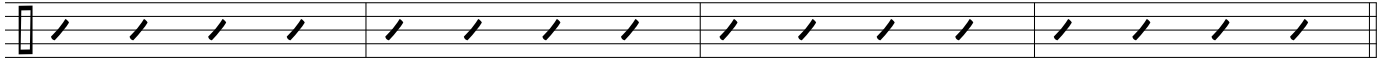
Musical notation for the first line of the second Refrain section, featuring a 4/4 time signature and a common time signature (C). The notation consists of diagonal slashes representing a drum pattern, with a common time signature (C) above the first measure, an Am chord above the third measure, and an F chord above the fourth measure.

THUNDER

C

Am

F

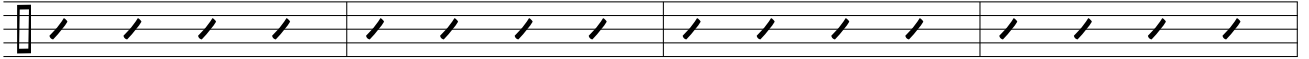


Em

G

Dm

INTERLUDE

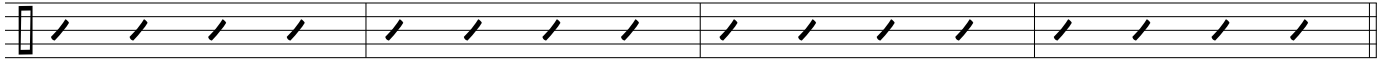


Em

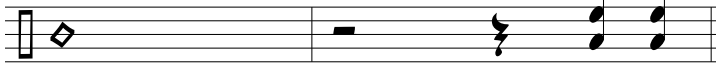
G

Dm

G



C



C

Am

F

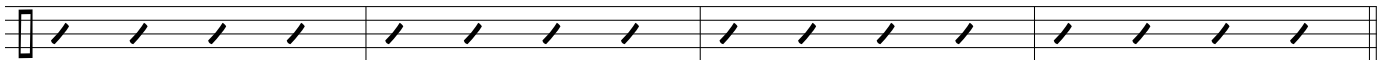
REFRAIN



C

Am

F

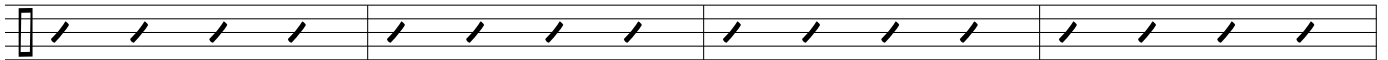


C

Am

F

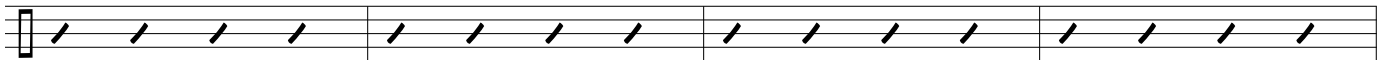
OUTRO



C

Am

F



C

