

DRUM

WHEN I COME AROUND

GREEN DAY

INTRO

HH

VERSE

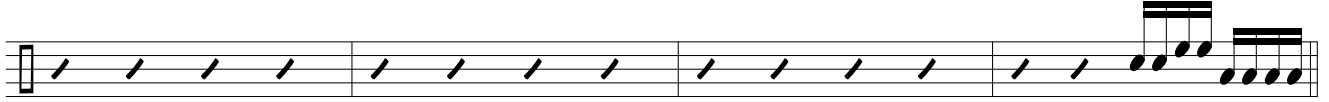
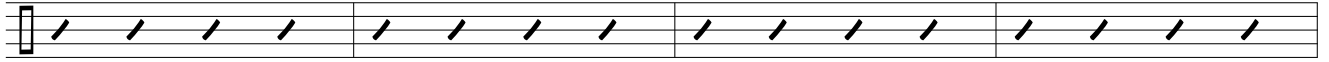
CHORUS

RIDE

HH

VERSE

WHEN I COME AROUND



CHORUS **RIDE**

A musical staff for the Chorus Ride cymbal. It features a series of 'x' marks above eighth notes in the first three measures, followed by a melodic phrase of eighth notes in the final measure.

HH

A musical staff for the Chorus Hi-Hat. It features a series of 'x' marks above eighth notes in the first two measures, followed by rhythmic slashes in the final two measures.

INTERLUDE

A musical staff for the Interlude. It features a series of 'x' marks above eighth notes in the first two measures, followed by rhythmic slashes in the final two measures.

CHORUS **RIDE**

A musical staff for the Chorus Ride cymbal. It features a series of 'x' marks above eighth notes in the first three measures, followed by a melodic phrase of eighth notes in the final measure.

HH

A musical staff for the Chorus Hi-Hat. It features a series of 'x' marks above eighth notes in the first two measures, followed by rhythmic slashes in the final two measures.

OUTRO

A musical staff for the Outro. It contains four measures of rhythmic slashes, with a melodic phrase of eighth notes in the final measure.