

BASSE

TWIST AND SHOUT

THE BEATLES

INTRO

The Intro section consists of a single staff. It begins with a slash and a fermata, followed by a quarter rest. The word "RIDE" is written above the staff. The music then features a series of eighth notes with 'x' marks above them, indicating a rhythmic pattern. The staff ends with a double bar line.

COUPLET

The first Couplet section consists of a single staff with a slash and a fermata. It contains four measures of rhythmic notation represented by slanted lines. The staff ends with a double bar line and a "4x" multiplier.

The second Couplet section consists of a single staff with a slash and a fermata. It contains four measures of rhythmic notation represented by slanted lines. The staff ends with a double bar line and a "4x" multiplier.

SOLO

The Solo section consists of a single staff with a slash and a fermata. It begins with a treble clef and a sharp sign. The music features a series of eighth notes with 'x' marks above them. The staff ends with a double bar line.

This part of the Solo section consists of a single staff with a slash. It features a series of eighth notes with 'x' marks above them. The staff ends with a double bar line.

This part of the Solo section consists of a single staff with a slash. It features a series of eighth notes with 'x' marks above them. The staff ends with a double bar line.

COUPLET

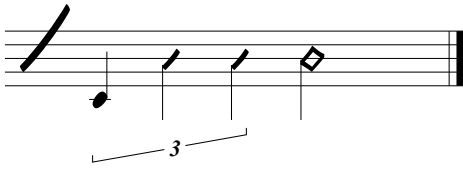
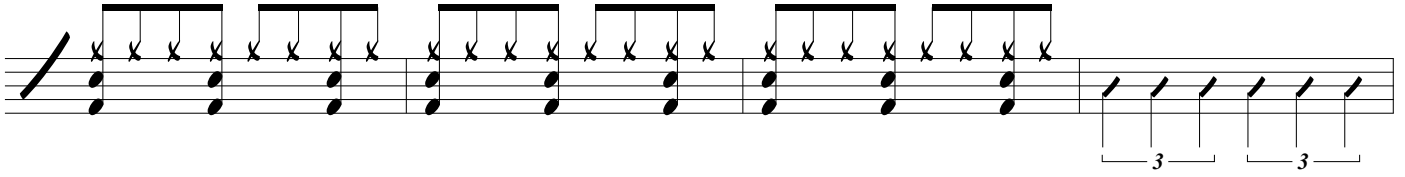
The first Couplet of the Solo section consists of a single staff with a slash and a fermata. It features a series of eighth notes with 'x' marks above them. The staff ends with a double bar line and a "(2ND TIME ONLY)" multiplier.

The second Couplet of the Solo section consists of a single staff with a slash. It features a series of eighth notes with 'x' marks above them. The staff ends with a double bar line.

TWIST AND SHOUT



OUTRO



Fine