

# DRUM

# NO WOMAN NO CRY

BOB MARLEY

**INTRO**

The intro consists of a 4-measure sequence. The first measure is a whole rest. The second measure contains a bass line with a quarter note G and a quarter note F. The third and fourth measures are eighth-note chords: G/B, Am, F, C, F, C, G. Above the staff, there are rhythmic markings: 'x' for the snare and 'o' for the bass drum. A 'BASS PICK UP' instruction is placed below the first measure.

G C G/B Am F C F C G

C G/B Am F C F C G

**REFRAIN**

The first line of the refrain consists of four measures of rhythmic notation (slashes) on a five-line staff. Below the staff are the chords: C, G/B, Am, F, C, F, C, G.

C G/B Am F C F C G

The second line of the refrain consists of four measures of rhythmic notation (slashes) on a five-line staff. Below the staff are the chords: C, G/B, Am, F, C, G/B, Am, F.

C G/B Am F C G/B Am F

**COUplet**

The first line of the couplet consists of four measures of rhythmic notation (slashes) on a five-line staff. Below the staff are the chords: C, G/B, Am, F, C, G/B, Am, F.

C G/B Am F C G/B Am F

The second line of the couplet consists of four measures of rhythmic notation (slashes) on a five-line staff. Below the staff are the chords: C, G/B, Am, F, C, F, C, G.

C G/B Am F C F C G

**REFRAIN**

The first line of the second refrain consists of four measures of rhythmic notation (slashes) on a five-line staff. Below the staff are the chords: C, G/B, Am, F, C, F, C, G.

C G/B Am F C F C G

The second line of the second refrain consists of four measures of rhythmic notation (slashes) on a five-line staff. Below the staff are the chords: C, G/B, Am, F, C, G/B, Am, F.

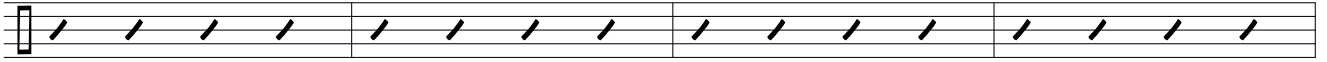
C G/B Am F C G/B Am F

**COUplet**

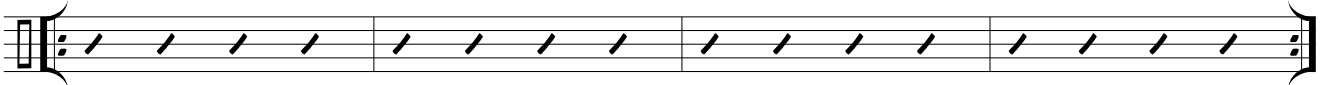
The first line of the second couplet consists of four measures of rhythmic notation (slashes) on a five-line staff.

# NO WOMAN NO CRY

C G/B AM F C G/B AM F

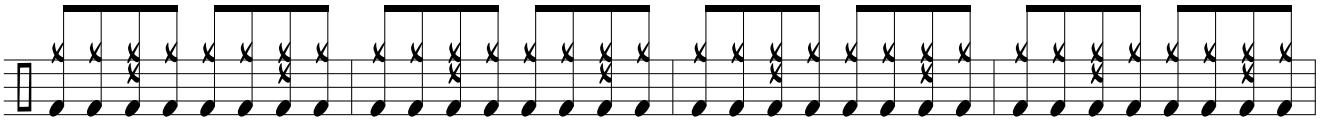


C G/B AM F C G/B AM F

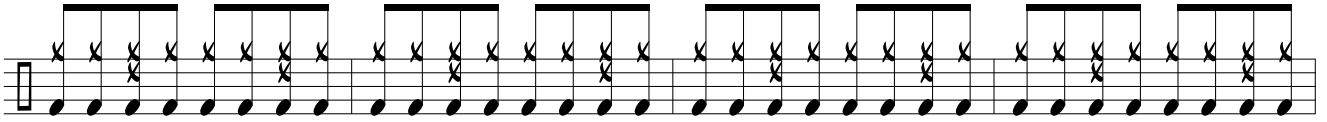


C G/B AM F C F C G

## BRIDGE

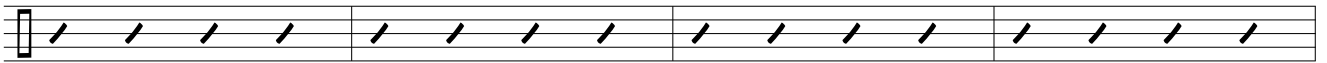


C G/B AM F C F C G

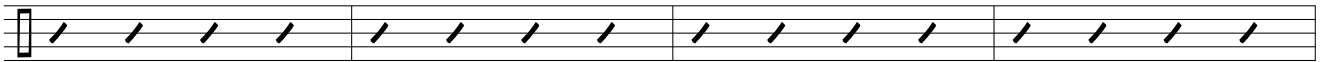


C G/B AM F C F C G

## REFRAIN

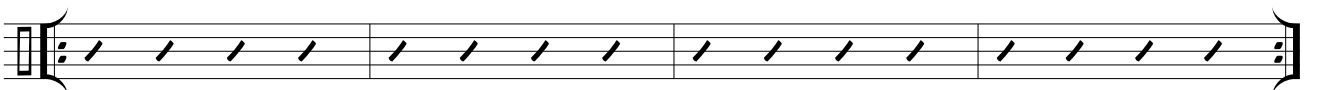


C G/B AM F C F C G



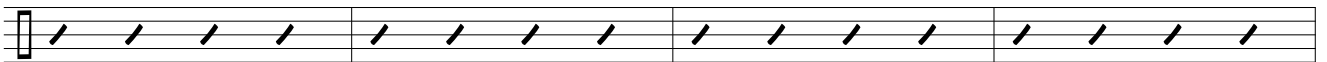
C G/B AM F C F C G

## SOLO



C G/B AM F C F C G

## REFRAIN



C G/B AM F C F C G



FINE