

# GUISTARE 2

# MY LIFE IS GOING ON

LA CASA DE PAPEL

CAPO 11

Am



Em/G



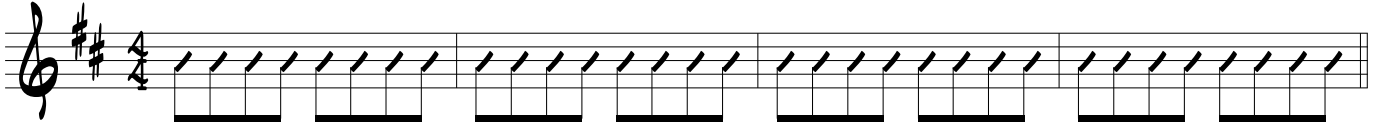
D/F#



Dm/F



## INTRO



## COUPLET



If I stay with you, if I'm choosing wrong I don't care at all



If I'm loosing now, but I'm wining late That's all I want

## INSTRU



## COUPLET



Now we need some space, 'cause I feel for you And I wanna change



Growing up alone, it seems so short I can't explain

## PRE



Whatever happens in the future, trust in destiny



Don't try to make anything else even when you feel I don't care at all

# MY LIFE IS GOING ON

**REFRAIN**

D F Am D

I am lost I don't care at all

F D Am D

F G

Lost my time, my life is going on

**INSTRU**

Am Em/G D/F# Dm Dm

**COUplet**

Am<sup>mp</sup> Em D Dm

I will be so strong, looking for a new version of myself

Am Em D Dm

Cause now all I want is to be a part of my new world

**PRE**

Am C F D

Whatever happens in the future, trust in destiny

Am C F G

Don't try to make anything else even when you feel I don't care at all

**REFRAIN**

D F Am D

I am lost I don't care at all

# MY LIFE IS GOING ON

F D Am D

Why not have it all all

F D Am D

I am lost I don't care at all

F D Am D

♩ ♩ ♩ ♩

F G Am

Lost my time my life is going on