

BATTERIE

MY LIFE IS GOING ON

LA CASA DE PAPEL

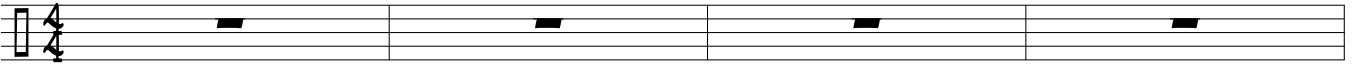
Bm

F#m/A

E/G#

Em/G

INTRO



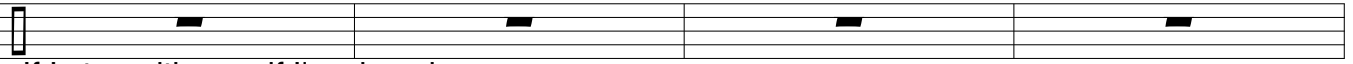
Bm

F#m/A

E/G#

Em/G

COUPLÉ



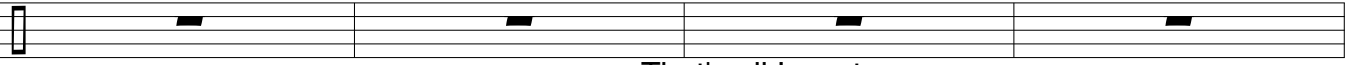
If I stay with you, if I'm choosing wrong I don't care at all

Bm

F#m/A

E/G#

Em/G



If I'm loosing now, but I'm wining late That's all I want

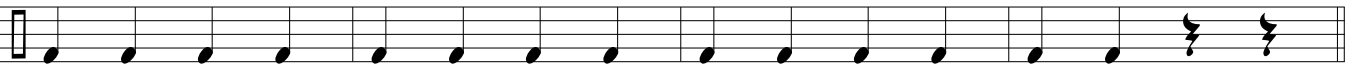
Bm

F#m/A

E/G#

Em/G

INSTRU



Bm

F#m/A

E/G#

Em/G



COUPLÉ

Now we need some space, 'cause I feel for you And I wanna change

Bm

F#m/A

E/G#

Em/G



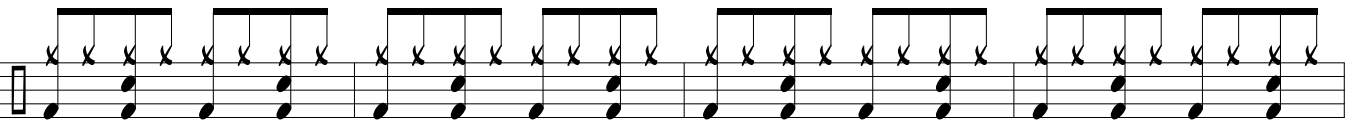
Growing up alone, it seems so short I can't explain

Bm

D

G

E



PRE

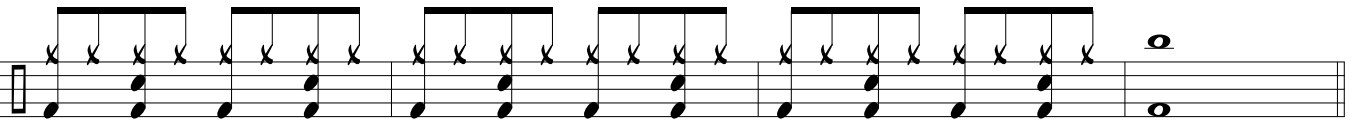
Whatever happens in the future, trust in destiny

Bm

D

G

A



Don't try to make anything else even when you feel I don't care at all

MY LIFE IS GOING ON

REFRAIN

E G Bm E

I am lost I don't care at all

G E Bm E

G A

Lost my time, my life is going on

Bm +HH F#m/A E/G# EM/G 1. EM/G 2.

INSTRU

COUplet

Bm F#m/A E/G# EM/G

I will be so strong, looking for a new version of myself

Bm F#m/A E/G# EM/G

Cause now all I want is to be a part of my new world

PRE

Bm D G E

Whatever happens in the future, trust in destiny

Bm D G A

Don't try to make anything else even when you feel

I don't care at all

REFRAIN

E G Bm E

I am lost

I don't care at all

MY LIFE IS GOING ON

G E Bm E

G E Bm E

Why not have it all all

G E Bm E

I am lost I don't care at all

G A Bm

Lost my time

my life

is going on