

DRUM

LA RUE PRINCIPALE

LES COLOCS

SWING

G

G

INTRO

Musical notation for the Intro section, showing a 4/4 time signature and a sequence of notes and rests.

A

G

G

D

COUPLET

Musical notation for the first Couplet section, consisting of a single line of rhythmic slashes.

DANS MA P'TITE VILLE

C

D

EM

C

D

G

Musical notation for the first Couplet section, showing a sequence of notes and rests.

QUAND T'Y RETOURNE ÇA ME FAIT ASSEZ MAL ... DEPUIS QU'ILS ONT CONSTRUIT

B

G

G

D

COUPLET

Musical notation for the second Couplet section, consisting of a single line of rhythmic slashes.

L'AUTRE JOUR T'AMENÉ, MA BIEN AIMÉE

C

D

EM

C

D

G

Musical notation for the second Couplet section, showing a sequence of notes and rests.

QUAND T'Y RETOURNE ÇA ME FAIT ASSEZ MAL ... DEPUIS QU'ILS ONT CONSTRUIT

C

C

G

C

D

G

REFRAIN

Musical notation for the Refrain section, showing a sequence of notes and rests.

UNE BONNE JOURNÉE

D

G

G

D

COUPLET

Musical notation for the third Couplet section, consisting of a single line of rhythmic slashes.

AVANT LA VENUE, DU CENTRE D'ACHAT

C

D

EM

C

D

G

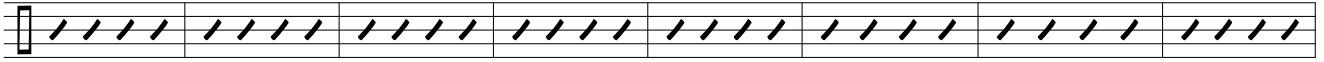
Musical notation for the third Couplet section, showing a sequence of notes and rests.

LA RUE PRINCIPALE

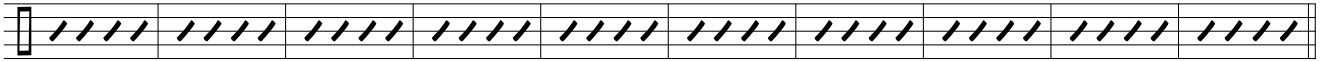
E

G C G EM A D

SOLO



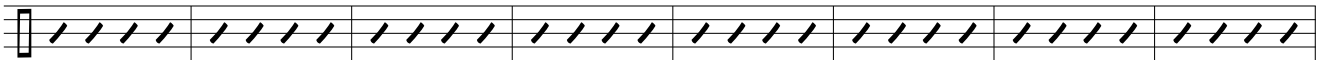
G C G EM A D G



F

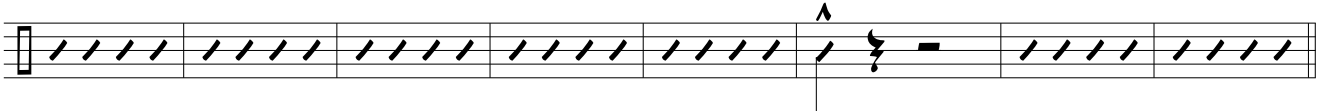
G G D

COUplet



DANS MA PETITE VILLE

C D EM C D G



G

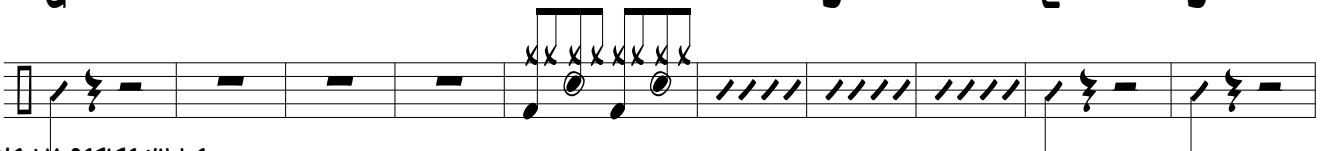
C G C D G

REFRAIN



UNE BONNE JOURNÉE

G G D C D



DANS MA PETITE VILLE

EM C D G



LE CENTRE D'ACHAT, LE CENTRE D'ACHAT LE CENTRE D'ACHAT, LE CENTRE D'ACHAT