

POP/DANCE

ORIGINALE: BM

ONE REPUBLIC

♩ = 140

IF I LOSE MYSELF

Am F C C C/D

Am F C C C/D

5

(A)

-RR+HH IN- Am F C C C/D

9 (VX IN)

Am F C C C/D

13

(B)

-BASS IN- Am F C C C/D

17

Am F C C

21

(C)

Am F C

25

Am F C C

29 *SIMILE*

IF I LOSE MYSELF (p.02)

INSTRUMENTAL

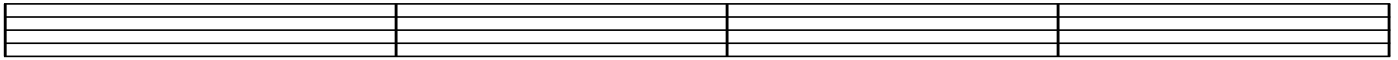
Am

F

C

C

C/G

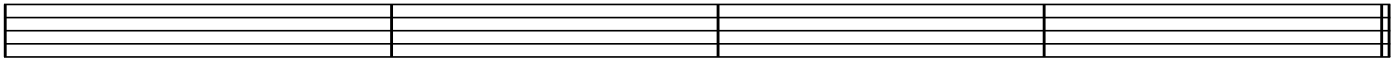


35

Am

F

C



39

-BAND OUT-

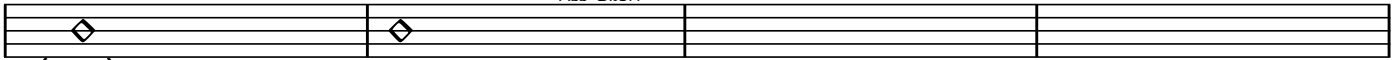
(D)

Am

F

C

C



43 (VX IN)

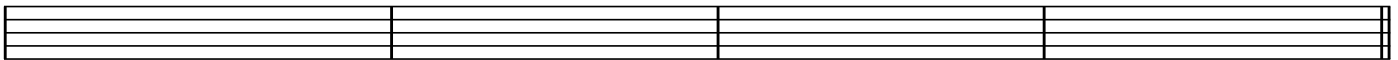
-BAND IN-

Am

F

C

C



47

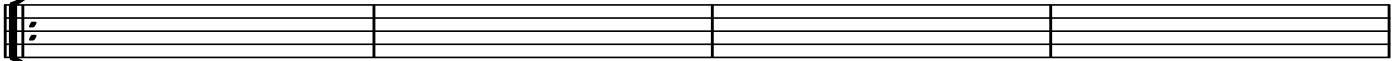
Am

F

C

C

C/D



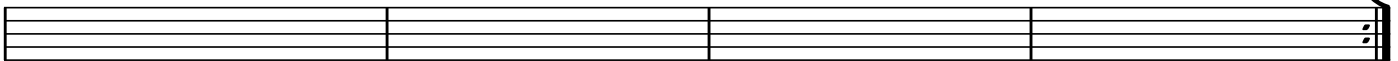
51

Am

F

C

C



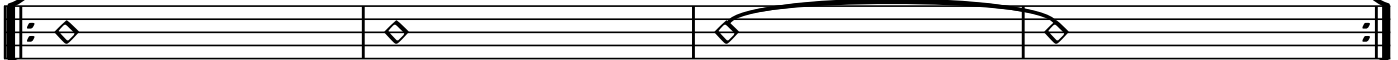
55

(E)

Am

F

C

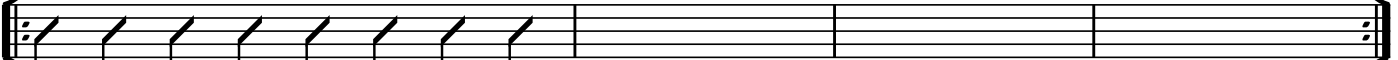


59

Am

F

C



63

SIMILE

IF I LOSE MYSELF (p.03)

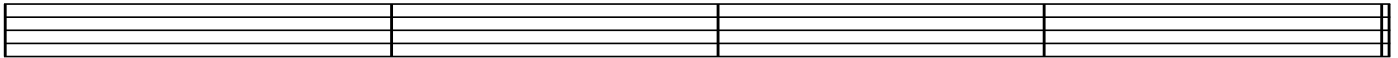
INSTRUMENTAL

Am F C C C/G



67

Am F C



71

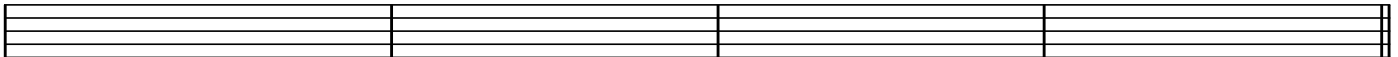
F

Am F C C C/G



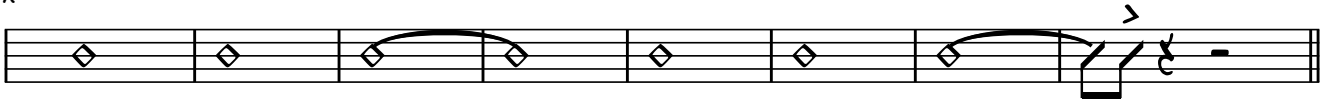
75 (VX IN)

Am F C



79

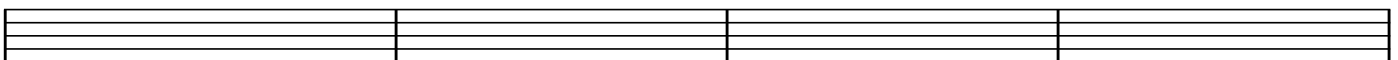
-DRUM + VX- Am F C Am F C



83

G

Am F C C C/G



91

Am F C

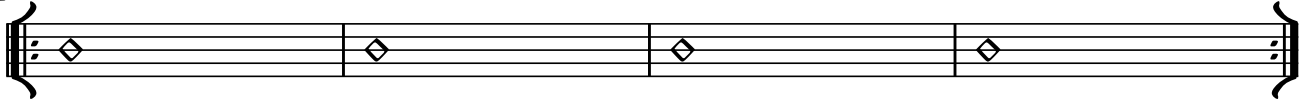


95

-BAND OUT-

-PIANO ONLY-

Am F C G



99